



GT3B Voltage Regulator Install Instructions

Written By

Austin Hutchison

Step 1:

Remove 4 screws located on top of the radio.



**Step 2:**

There are small plastic latches that also hold the top in place. The easiest way to pull the top cover off is to push these latches open, but it may knar up the plastic a little. If you don't wish to knar up the plastic you can take a chance and muscle the top cover off,



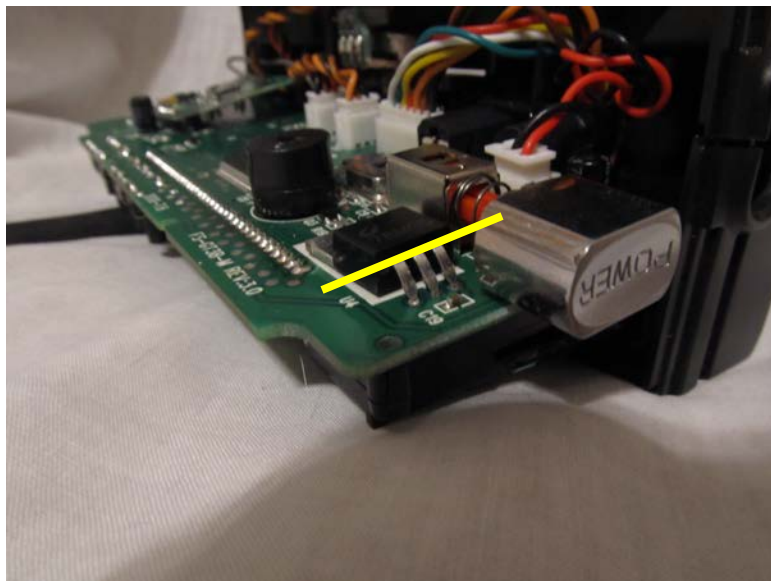
however this may lead to worse damage. To disengage the plastic latches use a small flat head and insert in the places shown on the picture and gently pull up on the cover...on the front side its located near the diagonal on the screen pop out, and the back side is located directly across

**Step 3:**

With the antenna up pull the top cover off. The rotary knob is attached to the board as well. So it would be smart to gently pry that off the top cover with your fingernails or small flat head screw driver. Other side gently muscle off the cover, the knob will come with it.

**Step 4:**

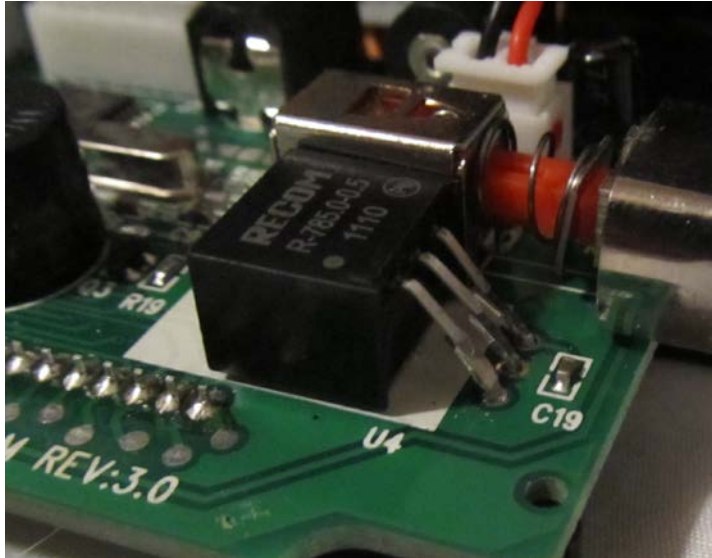
Gently pull the board towards the front of the radio to pull the power button out of its slot. Now twist it so the screen side is resting on the antenna. **The antenna cable is short and has a fragile connection to the rf module. Make sure you do not pull/apply any pressure to this cable, as it can be a very difficult repair. Twist the ST and TH trim buttons up out of the case.**

**Step 5:**

Now take a pair of snips/side cutters and snip the leads of the current voltage regulator as close as you can to it. At the yellow line

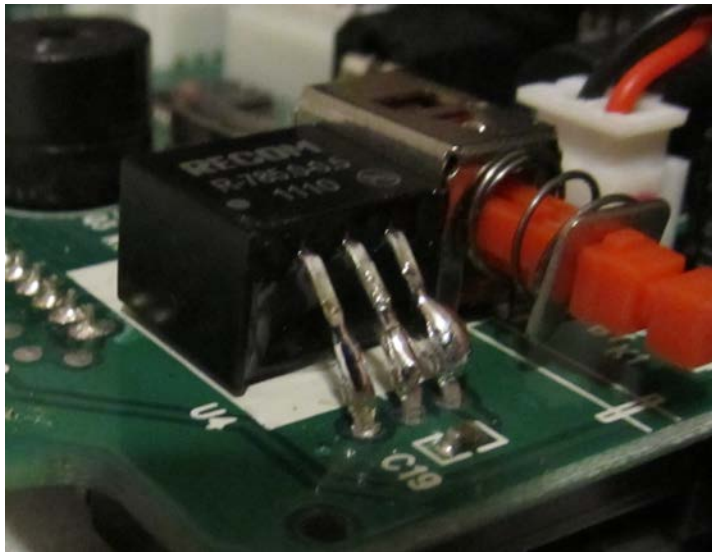
**Step 6:**

Peel the one of films off of the include adhesive. Apply the adhesive to the back of the new voltage regulator; apply a firm pressure to it. Now peel off the other film.



Step 7:

Now stick the regulator in position, make sure the pins are touching, don't need to be much.



Step 8:

Solder the pins together...It is easier to-do if you pull the power button off

Step 9:

Put it back together

Step 10:

Enjoy long battery life